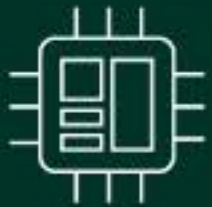



## 6G and AI:

# Rethinking Test in Next Generation Wireless Systems

[Read Article Now](#)



A close-up photograph of a motor's internal stator, showing three copper windings mounted on a white plastic frame. The windings are arranged in a circular pattern, and the copper coils are clearly visible. The background is slightly blurred, showing other parts of the motor assembly.

# Revolutionizing Motor Validation: Infinitum's Journey to Cutting-Edge Test Automation Excellence

[Read Article Now](#)



# AI and the Dot-com Bubble

[Read Article Now](#)

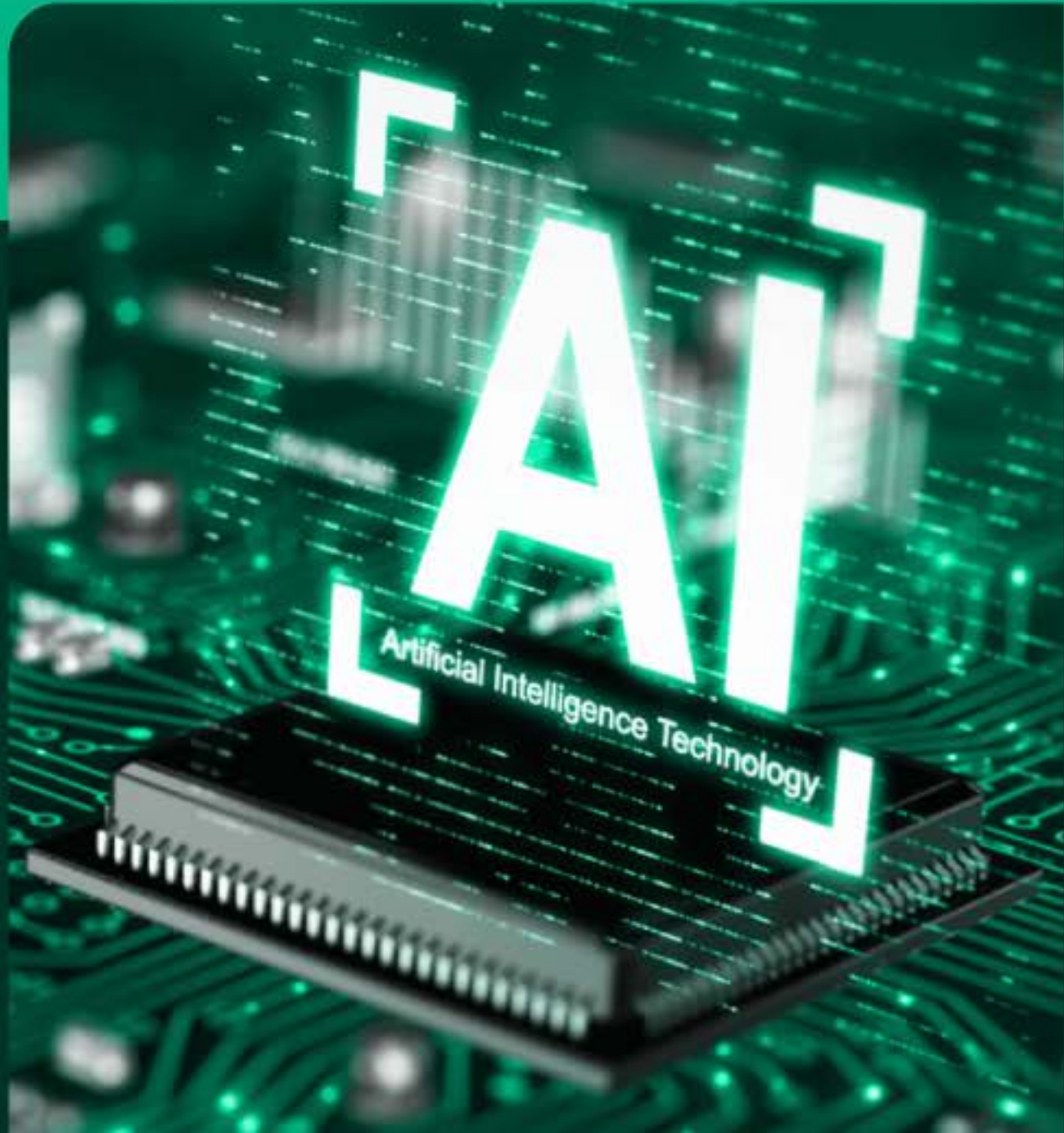




# What Powers Milwaukee Tool's Reputation? Look to the Lab

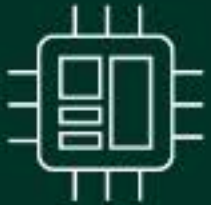
[Read Article Now](#)





## Meet Nigel™, NI's New AI Advisor

[Read Article Now](#)



**POWER SUPPLY  
TEST SYSTEM!**  
Embedded Tektronix  
MDO-Series Mixed  
Signal Oscilloscope!

## DC Power Supply Test System

### Engineering Characterization/Design Verification Test System – 5710 Series

- **NEW!** Tektronix MDO-Series Mixed Signal Oscilloscope
- Unlimited voltage, current & timing measurements relative to digital signals.
- Library of design verification test routines reduces program development time
- Configuration flexibility

**FREE TEST EVALUATION:** *You Provide The Specifications, We'll Provide The Test Solution!*

*For additional specs visit the product webpage or contact us today!*





**LOW VOLTAGE  
HIGH CURRENT  
BATTERY CYCLER!**  
Designed for Testing  
All Battery  
Chemistries!

## **Dual Bay 9220 Series Low Voltage/High Current Battery Cycler**

### **New Dual Bay Cabinet Design!**

For automated characterization, power cycling, & life-cycle testing of low voltage/high current batteries & more!

- Single output up to 40V/3,600A/72kW per system
- Parallel expansion up to 7,200A
- Built-in digital measurements including Ah & kWh
- Multiple safety layers to protect battery/DUT

*For additional information visit the product webpage or contact us today!*



**REGENERATIVE  
GRID SIMULATOR!**  
Flexibility to test the  
broadest selection of  
grid-tied products.

## **NHR Launches 9510 Regenerative Grid Simulator 50kw up to 1.2MW**

The Next Generation Test Solution for Grid-Tied Applications:  
Solar PV, V2G, Energy Storage Systems, Utility Grid,  
EV Charging, and more!

- Optimized for PHIL
- Optional 4-Q AC Load
- Test to grid-tied standards worldwide

*For additional specs visit the product webpage or contact us today!*





**ON THIS  
VETERANS DAY:**  
Take The Time To  
Honor Those Who  
Have Served In The  
Military!

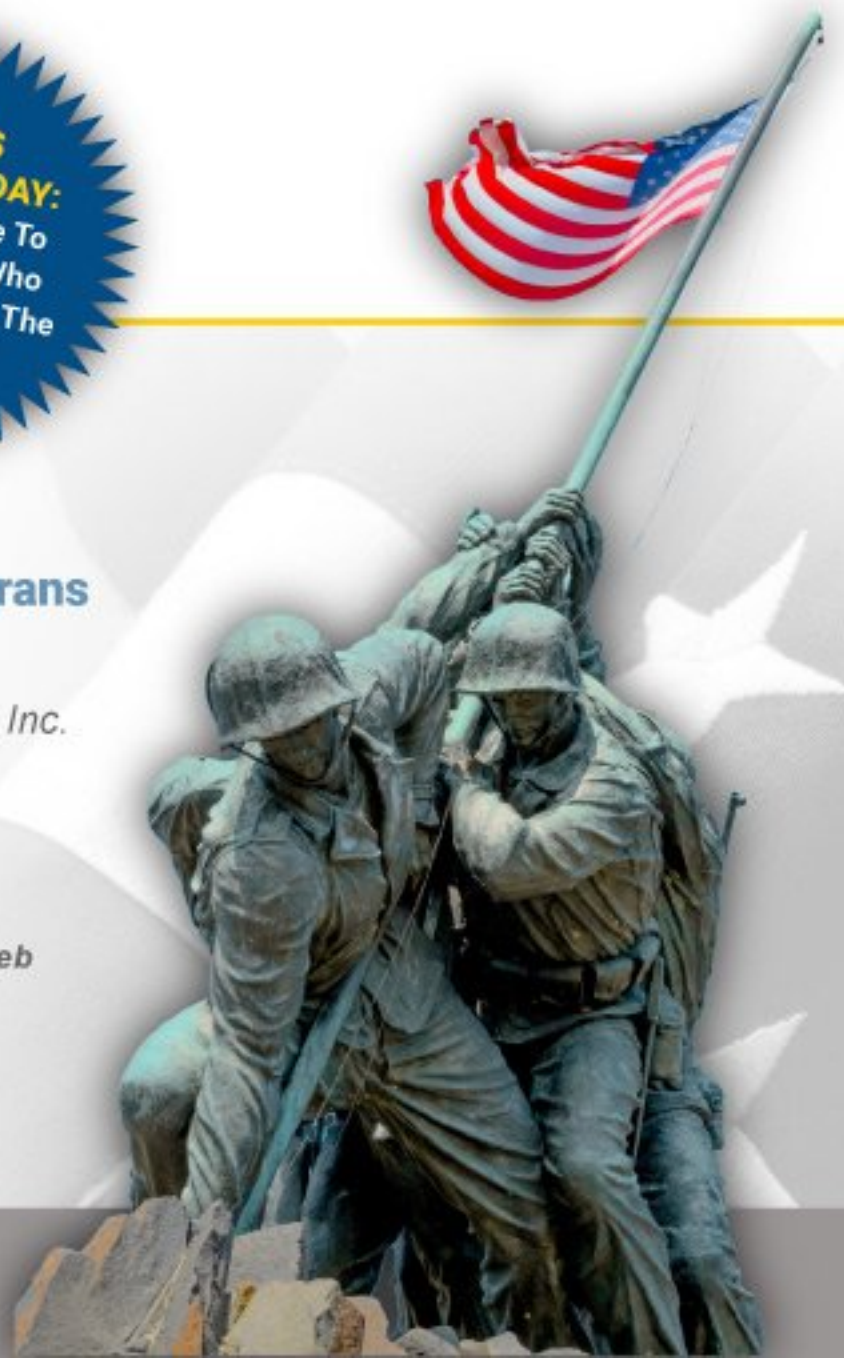


## **In Observance of Veteran's Day Honor Those Who Have Served**

### **Take The Time to Remember Our Military Veterans & The Sacrifices They Have Made**

*In observance of Veteran's Day we here at NH Research, Inc. would like to take a moment to honor all military veterans who have served while remembering the sacrifices our military veterans have made!*

*For additional information on Veteran's Day visit the following web page: <http://www.va.gov/opa/vetsday/vetdayhistory.asp>*



# ***Programmable AC Power Source***

## ***Model 61500 Series***

- ▶ 1 - 3 Phase
- ▶ Highest performance AC Source with power analyzer functions built-in
- ▶ Provides 0-300VAC or 0-424VDC output from a single source
- ▶ Built-in DSP provides for voltage transient simulations, harmonic current measurements & compliance testing for many IEC & Military standards



**Chroma**  
Systems Solutions

For more specs visit us today at [www.chromausa.com](http://www.chromausa.com)

"World leader in power electronics test instruments & systems"



# Modular DC Electronic Load

## Model 63600 Series

- ▶ 3 Current Ranges per load
- ▶ Max. Power: 100W x 2(Dual), 300W & 400W
- ▶ Derated Current to 10mV
- ▶ Constant Impedance Mode
- ▶ USB, GPIB, Ethernet
- ▶ Digitized Volt & Current Readback (2 $\mu$ s sampling)



**Chroma**  
Systems Solutions

For more specs visit us today at [www.chromausa.com](http://www.chromausa.com)

"World leader in power electronics test instruments & systems"